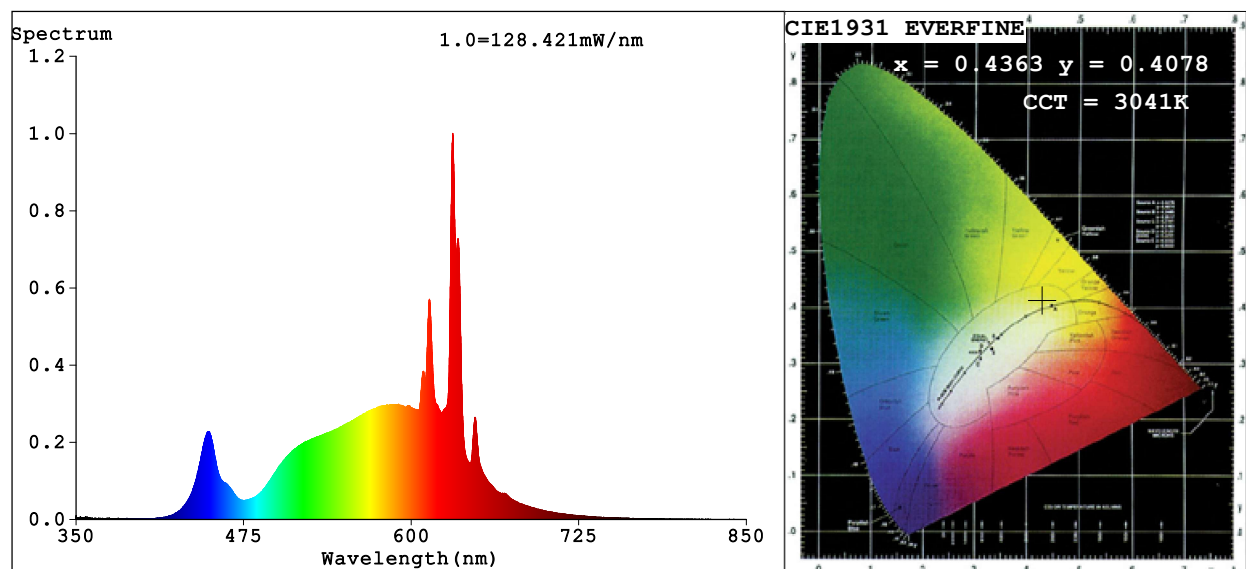


Spectrum Test Report



Color Parameters:

Chromaticity Coordinate: $x=0.4363$ $y=0.4078$ $u'=0.2486$ $v'=0.5227$

CCT=3041K (Duv=0.0016) Dominant WL:Ld =582.1nm Purity=53.3%

Ratio:R=24.0% G=73.7% B=2.3%; Peak WL:Lp=630.9nm FWHM=8.0nm

Render Index:Ra=90.7 CRI=86.9 TM30:Rf=89 Rg=101

R1 =92 R2 =93 R3 =92 R4 =92 R5 =90 R6 =91 R7 =93

R8 =83 R9 =56 R10=81 R11=93 R12=75 R13=91 R14=94 R15=88

Photo Parameters:

Flux = 2375 lm Eff. : 130.41 lm/W Fe = 6.887 W

Electrical parameters:

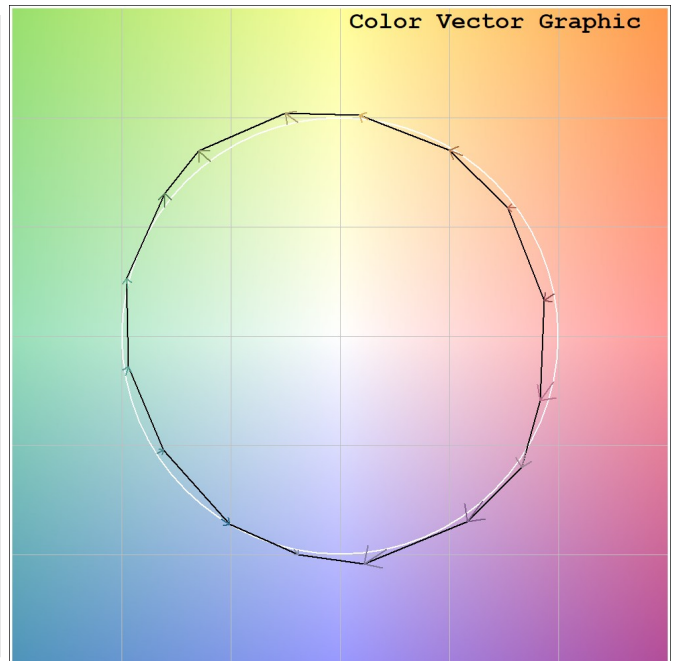
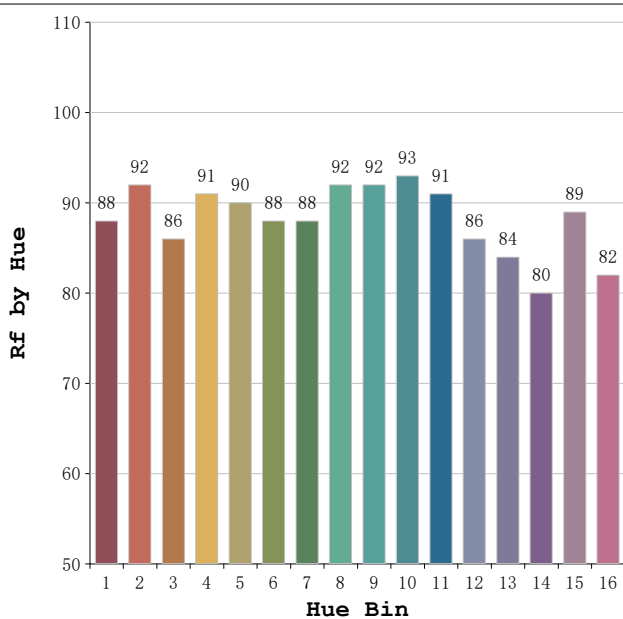
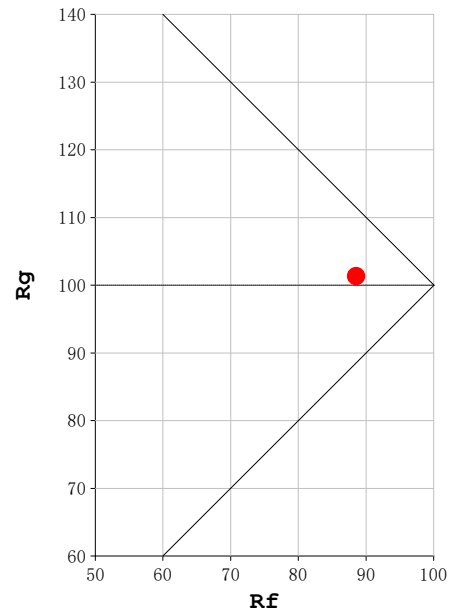
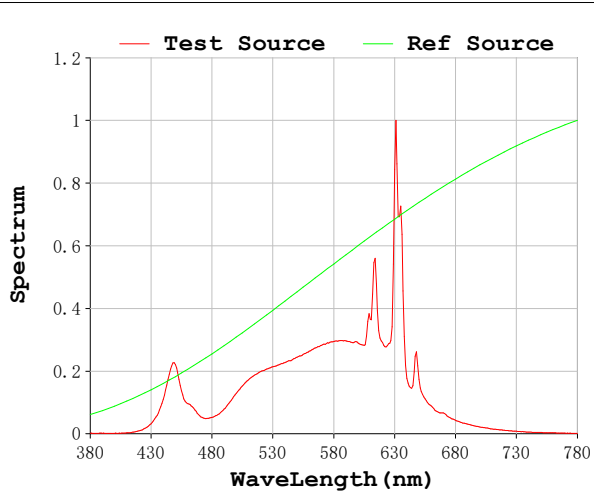
V = 230.14 V I = 0.08803 A P = 18.22 W PF = 0.8992

Status: Integral T = 167 ms Ip = 34978 (53%)

Model:Spotia 18w Blanco
 Tester:Sergio Carneros
 Temperature:20Deg
 Manufacturer:Luz Negra

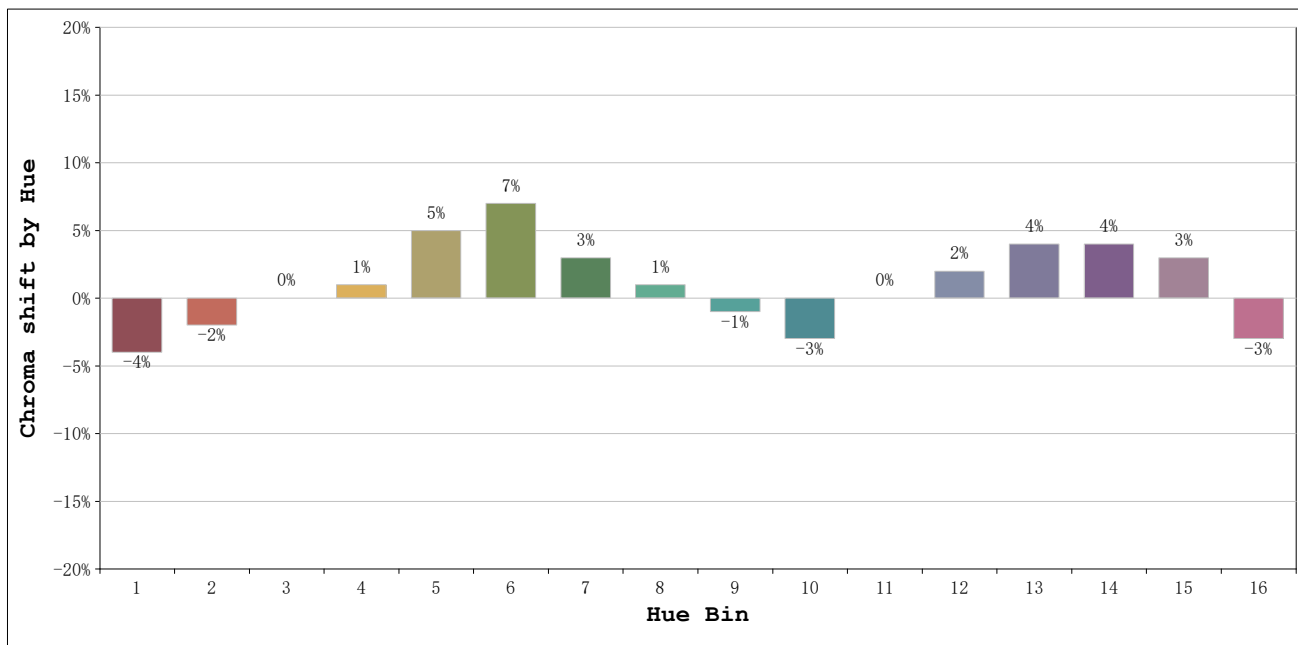
Number:3000k 18°
 Date:2026-03-23 15:03:38
 Humidity:50%
 Remarks:1 unidad

Rf: 89 **CCT: 3041 K** **u': 0.2486**
Rg: 101 **Duv: 0.0016** **v': 0.5227**



Model:Spotia 18w Blanco
 Tester:Sergio Carneros
 Temperature:20Deg
 Manufacturer:Luz Negra

Number:3000k 18°
 Date:2026-03-23 15:03:38
 Humidity:50%
 Remarks:1 unidad



			Graphic shift(%)	
Hue Bin	Hue Angle	Rf	Chroma	Hue
1	0.0° - 22.5°	88	-4	-1
2	22.5° - 45.0°	92	-2	2
3	45.0° - 67.5°	86	0	7
4	67.5° - 90.0°	91	1	5
5	90.0° - 112.5°	90	5	5
6	112.5° - 135.0°	88	7	2
7	135.0° - 157.5°	88	3	-4
8	157.5° - 180.0°	92	1	-3
9	180.0° - 202.5°	92	-1	-3
10	202.5° - 225.0°	93	-3	0
11	225.0° - 247.5°	91	0	5
12	247.5° - 270.0°	86	2	3
13	270.0° - 292.5°	84	4	-11
14	292.5° - 315.0°	80	4	-10
15	315.0° - 337.5°	89	3	-6
16	337.5° - 360.0°	82	-3	-8

Model:Spotia 18w Blanco
 Tester:Sergio Carneros
 Temperature:20Deg
 Manufacturer:Luz Negra

Number:3000k 18°
 Date:2026-03-23 15:03:38
 Humidity:50%
 Remarks:1 unidad